

PWA-100

802.11b/g Wireless Signage Adapter For Network Media Players



The IAdea PWA-100 Wireless Signage Adapter enables wireless network management for all IAdea network-capable media players, simplifying hardware installation.

Drop-in Ethernet cable replacement

When your network installation demands minimal impact or frequent relocation, the PWA-100 adapter offers flexible wireless networking options for connected digital signage. The compact device can be attached to your media player or display, out of sight, eliminating the need for running an Ethernet cable between the player and your network. IAdea's enhanced wireless connection lets you reliably manage multiple players across the network without the cable clutter.

Uses Standard 802.11b/g Wi-Fi Technology

Equipped with a high-gain antenna, the PWA-100 Wireless Signage Adapter provides optimal connection with any standard 802.11b/g Wi-Fi network setup. The adapter supports industry standard network encryption methods (WPA/WEP) for secure connections.

Smart reconnect/resume ensure transfers

Unlike streaming video players, the PWA-100's wireless connection lets you manage your IAdea players across greater distances and in higher interference environments. Smart reconnect and resume delivers your contents reliably even when subjected to frequent wireless network failures. The player retains media files during a disconnection, and once a connection is automatically re-established, the player will resume downloading from the point of disconnection. This ensures that all downloads are completed in the shortest transfer times.

Highlights

- ◆ **Drop-in Ethernet cable replacement for network media players**
- ◆ **Wireless 802.11b/g technology**
- ◆ **Smart reconnect/resume ensure content transfers**

Suitable for

- ◆ **Vehicle and mobility**
- ◆ **Historic sites**
- ◆ **Temporary installations**
- ◆ **Wi-Fi equipped establishments**
- ◆ **Outdoor display systems**

Technical Specifications

Wireless Network Standard

- IEEE 802.11 b/g standards compliant
- Security: WEP-64/128/256-bit, WPA, WPA2

Antenna

- High gain antenna (2dBi)

Frequency Range

- USA (FCC): 2.412GHz ~ 2.462GHz
- Europe (ETSI): 2.412GHz ~ 2.472 GHz
- Japan (TELEC): 2.412GHz ~ 2.483GHz

Number of Selectable Channels

- USA (FCC) 11 channels;
- EU (ETSI) 13 channels;
- Japan (TELEC) 14 channels

Data Rate

- 802.11b: 1, 2, 5.5, 11Mbps
- 802.11g: 6, 9, 12, 18, 24, 36, 48, 54Mbps

Coverage Area

- Indoor: up to 100 ft, typical 30 ft
- Outdoor: up to 100 ft

Transmit Power (EIRP)

- 11b CCK: 18dBm
- 11g OFDM: 16dBm

Receiver Sensitivity

- -68dBm at 54Mbps, 10% PER ;
- -82dBm at 11Mbps, 8% PER ;

Accessories

- 100-240V AC power adapter
- Ethernet cable
- High gain antenna

Power

- DC input: 3.3V@1.5A
- Power consumption: 5W max.

Environmental

- Operating temperature: 0 to 40°C
- Humidity: 5 to 85% @ 40°C, non-condensing

Dimensions (WxDxH)

- 5.3" x 4.4" x 1.0" (134mm x 114mm x 25mm)

Weight (incl. antenna)

- Approx .6 lbs (227 g)

Safety

- UL-approved AC adapter

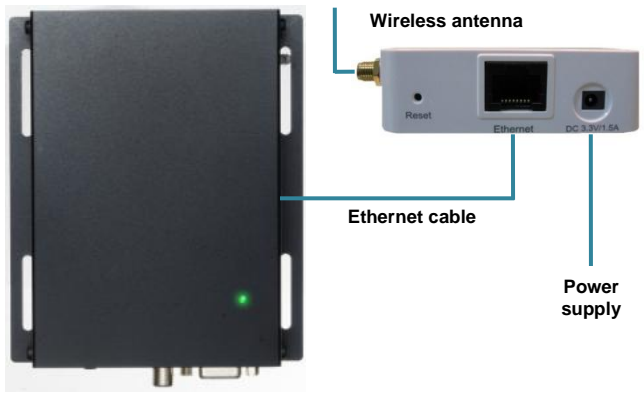
Certifications

- CE/FCC

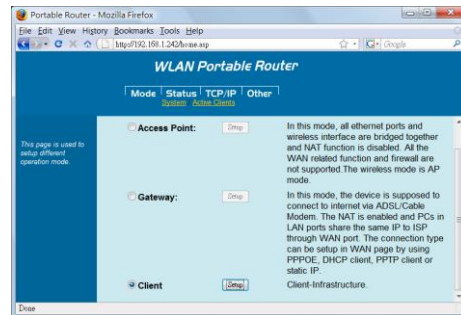
Warranty

- 1-year limited parts & labor

Product Images



System connection (player not included)



Web browser configuration interface

Contact

IAdea America Corp.

23 Monte Carlo
Irvine, CA 92614
United States of America
Email: US-Sales@IAdea.com

IAdea Corporation (Headquarter)

3F, No. 33, Alley 77, Xing-ai Road
Taipei, Taiwan 114
Phone: +886-2-2791-1110
Fax: +886-2-2791-1170
Email: Sales@IAdea.com
Website: <http://www.IAdea.com>

Authorized Reseller

