

# Better meetings with IAdea signboard



- PoE
- Touch
- Zero Gap
- Tempered Glass
- Light Bar
- Usage \* Analysis
- Room \* Check-in
- Multiple \* Calendars
- Central \* Administration
- Protected \* Reservations

## XDS-1078 Smart Signboard

\* Features provided by IAdea certified software partners.



### Room status light bar

Convenience at its best! Green, Amber or Red? The light bar shows room availabilities even when users are still down the hall from a distance.



### 1-wire installation

Anyone can easily install the device with only one cable in-hand, thanks to the PoE function, which transmits both power and information.



### Touch and book

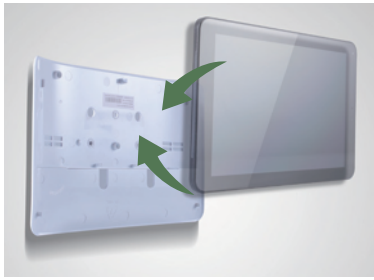
Why wait? IAdea Smart Signboard enables immediate booking, in addition to browsing of today's meetings, with the user-friendly touch function.



[www.IAdea.com](http://www.IAdea.com)



## Product Photos



Flush mount

### Flush mount + VESA mount

Unlike most typical signboards, XDS-1078 is flush mounted and much closer to the wall to deliver a much more visually pleasing and user intuitive industrial design of the system. IAddea provides step by step mounting guide, as easy as 1, 2, 3.



VESA mount

## Technical Specification

### Open Standards Supported

- HTML5, JavaScript, and CSS
- Android 4.4 API
- W3C SMIL for cross-platform management
- W3C Widgets for HTML delivery
- POPAI Digital Signage Content Standards, including:
  - S1 (JPEG 480p baseline)
  - S2 (JPEG 720p baseline)
  - S4 (MPEG L2 audio)
  - S5 (MP3 audio, 384Kbps)
  - S6 (MPEG-1 SIF, 3Mbps CBR)
  - S7 (MPEG-1 480p, 10Mbps CBR)
  - S8 (MPEG-1 720p, 15Mbps CBR)
  - S9 (MPEG-2 480p, 6Mbps CBR)
  - S10 (MPEG-2 720p, 12Mbps CBR)
  - S11 (H.264/MPEG-4 AVC, 480p, 6Mbps CBR)
  - S12 (H.264/MPEG-4 AVC, 720p, 10Mbps CBR)
- E1 (PNG 24bpp+alpha, 480p)
- E2 (PNG 24bpp+alpha, 720p)
- E4 (VC-1/WMV9, MP@ML, 720p)
- E7 (MPEG-4 ASP, 480p, 10Mbps CBR)
- E8 (H.264/MPEG-4 AVC, 1080p, 20Mbps CBR)

### Advanced Signage Features

- Remote commissioning
- AlwaysOn, AppLock to prevent unauthorized access
- StrongCache for continued playback even when network is not available

### HTML5 Support

- Widgets for calendar, clock, news, weather, Twitter, and web page integration
- HTML5 technologies including CSS and Javascript
- WebKit-based browser engine, same as Google Chrome™ and Apple Safari® browsers

### Display and Sound

- 10.1" LCD wide aspect ratio
- 10 points multi-touch
- 300 nits maximum brightness
- 1280x800 high resolution
- View Angle: 170 x170
- Built-in stereo speakers 1W x2
- Programmable LED bar x 2
- HDMI output to external display

### Content Management

- SignApps Express Utility
- 3rd party solution (optional license)

### Connectivity

- Wi-Fi:802.11 b/g/n
- Multi-points touch
- Ethernet 10/100 BASE-T
- Bluetooth 4.0
- 3.5mm analog stereo audio out
- USB 2.0 x 2
- Micro USB for ADB
- Optional 3G/4G mobile module via USB

### Local Storage

- 8 GB eMMC memory (approx. 360 minutes of typical 720p video @3 Mbps)
- Micro SD card slot (support up to 32GB storage)

### Mounting Kit

- Built-in VESA compatible 75x75(mm) posts

### Supplied Accessories

- Table stand
- Adapter
- Power plug
- DC in & Micro SD stopper
- HW & SW QSG

### Expansion Options

- 16GB/32GB micro SD/SDHC memory card

### AC Adapter

- Input: 100-240V, 50-60 Hz, 0.5A Max.
- Output: 12V, 1.5A
- UL/CB certified power supplies
- Interchangeable connector system includes US plugs (Option for EU, UK and AUS plugs)
- Power-over-Ethernet (PoE) single-wire installation

### Environmental

- Operating temperature: 0 to 40°C
- Storage Humidity: 10 to 85% @ 40°C, non-condensing

### Dimensions for Product & Package

- Size:
  - 269.88mm(W)x 170.77mm (H)x 28.5 mm (D)
  - 10.62" (W) x 6.72" (H) x1.12"(D)
- Weight: 727g/1.6 lb
- Individual Package Size:
  - 336mm (W) x 100mm(H) x 227 mm (D)
  - 13.2"(W) x 3.93"(H) x 8.93 (D)
- Outer Carton Size:
  - 695mm (W) x 260mm (H) x 530 mm(D)
  - 27.36"(W) x 10.23"(H) x 20.86"(D)
- Units per Outer Carton: 10

### Certifications

- CE/FCC

### Warranty

- 1-year limited parts & labor

## Contact

### IAddea Headquarters

3F, No. 21, Lane 168, Xingshan Road  
Taipei, Taiwan 114  
Phone: +886-2-2791-1110  
Fax: +886-2-2791-1170  
Email: Sales@IAddea.com

### IAddea America Corp.

20 Fairbanks, Suite 170  
Irvine, CA 92618  
Tel: +1-949-305-6489  
Email: US-Sales@IAddea.com

