

XDS-1062 Digital Signboard

10.1" Interactive Web Signboard



Highlights

- ◆ **ONE wire installation via PoE**
- ◆ **Interactivity via motion sensor and touch buttons**
- ◆ **Optimized for HTML5 and leading management solutions**

Suitable for

- ◆ **Meeting room/classroom door signs**
- ◆ **Table-top and shelf-edge signage**
- ◆ **Branded product promotions**
- ◆ **Museum and library information**
- ◆ **Interactive video display**

IAdea XDS-1062 Digital Signboard is a 10.1" all-in-one digital signage display with dedicated signage features for commercial deployment. It combines the power of HTML5, the interoperability of SMIL, and is compatible with most leading management solutions. Special hardware features make the device especially suited for digital signage.

ONE wire installation via PoE

Harnessing years of experience in large digital signage networks, the XDS-1062 is designed with robustness in mind. It utilizes state-of-the-art Power-over-Ethernet (PoE) technology for delivering power and connectivity in one wire, significantly reducing the cost and risks during digital signage deployment. System storage utilizes 4GB of dedicated, shock-resistant solid state memory, capable of holding hours of multimedia content without the risk of crashing. A hardware watchdog timer ensures that in the rare event of failure, the device automatically recovers without human intervention.

Interactivity via motion sensor and touch buttons

Interactivity allows your content to leave a lasting impression with the viewer. The XDS-1062 features a motion sensor and six blinking touch buttons to facilitate interactivity with your viewers. The built-in motion sensor detects a person in front of the device to trigger playback. The touch buttons can be programmed to take user inputs and engage them with your interactive message. In addition, the replaceable front bezel can be tailor made to match the theme of your campaign.

Optimized for HTML5 and management solutions

Digital signage increasingly depends on dynamic content to attract the viewers. The XDS-1062 is optimized for displaying dynamic content retrieved via the Internet, be it from RSS feeds, news, weather, financial stats, sports scores, or even social network updates. In addition, the device works with most leading digital signage management software and SaaS services in the industry via the W3C HTML5 and SMIL open standard. It opens you to myriad of great and proven solutions to ensure the success of your digital signage project.

Technical Specifications

Open Standards Supported

- HTML5, JavaScript, and CSS
- Android 4.0 API
- W3C SMIL for cross-platform management
- W3C Widgets for HTML delivery
- POPAI Digital Signage Content Standards, including:
 - S1 (JPEG 480p baseline)
 - S2 (JPEG 720p baseline)
 - S4 (MPEG L2 audio)
 - S5 (MP3 audio, 384Kbps)
 - S6 (MPEG-1 SIF, 3Mbps CBR)
 - S7 (MPEG-1 480p, 10Mbps CBR)
 - S8 (MPEG-1 720p, 15Mbps CBR)
 - S9 (MPEG-2 480p, 6Mbps CBR)
 - S10 (MPEG-2 720p, 12Mbps CBR)
 - S11 (H.264/MPEG-4 AVC, 480p, 6Mbps CBR)
 - S12 (H.264/MPEG-4 AVC, 720p, 10Mbps CBR)
- E1 (PNG 24bpp+alpha, 480p)
- E2 (PNG 24bpp+alpha, 720p)
- E4 (VC-1/WMV9, MP@ML, 720p)
- E7 (MPEG-4 ASP, 480p, 10Mbps CBR)
- E8 (H.264/MPEG-4 AVC, 720p, 10Mbps CBR)

Advanced Signage Features

- Remote commissioning
- AlwaysOn, AppLock to prevent unauthorized access
- StrongCache for continued playback even when network is not available

Interactivity Features

- Six touch buttons
- PIR motion sensor (Range: left/right 45 degree within 3 meters)

Display and Sound

- 10.1" LCD wide aspect ratio
- 300 nits maximum brightness
- 800x480 resolution
- View Angle:
 - Top 45 / Bottom 65 / Right 65 / Left 65 degree
- Built-in stereo speakers 2Wx2
- HDMI output to external display

Playback Control

- Real-time clock playlist events
- Network playlist sync
- USB direct sync
- Motion detection events via motion sensor

Local Storage

- 4 GB flash memory (approx. 180 minutes of typical 720p video @3 Mbps)
- Memory card slot: Secure Digital (SD/SDHC)
- Storage capacity: Up to 32GB (SDHC)

Network Connectivity and I/O Ports

- Wi-Fi: IEEE 802.11 b/g/n (2.4GHz only)
- Wi-Fi Security: WPA/WPA2, TKIP/AES
- Ethernet: RJ45 Port
- USB storage host (Type A)
- 3.5mm stereo audio out jack

Mobile Connectivity Option

- 3G/4G mobile networking module via USB

Outlook Option

- Changeable front bezel

Supplied Accessories

- Display stand
- Quick start guide
- AC power adapter

Mounting Options

- Built-in VESA compatible 75x75(mm) posts

AC Adapter

- Input: 100-240V, 50-60 Hz, 0.5A Max.
- Output: 12V, 1.5A
- UL/CE/PSE certified power supplies
- Interchangeable connector system includes one of US + EU, UK, or AUS connector
- **Power-over-Ethernet (PoE) single-wire installation**

Environmental

- Operating temperature: 0 to 40°C
- Humidity: 5 to 85% @ 40°C, non-condensing

Dimensions for Product and Package

- Size (WxHxD): 27.8 cm x 18.6 cm x 4.0 cm / 10.95" x 7.32" x 1.58"
- Weight: 0.78 kg / 1.72 lbs.
- Inner Carton Size: 32 cm x 25.5 cm x 9 cm / 12.6" x 10.04" x 3.54"
- Inner Carton Weight: 1.604 kg / 3.54 lbs.
- Outer Carton Size: 47.5 cm x 28 cm x 35 cm / 18.7" x 11.02" x 13.78"
- Outer Carton Weight: 8.72 kg / 19.22 lbs.
- Units per Outer Carton: 5

Certifications

- CE/FCC/RoHS

Warranty

- 1-year limited parts & labor

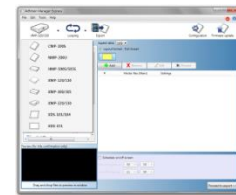
Product Views



6 buttons interactivity



Built-in VESA mount (Rear view)
Attaches to MIS-D 75 hardware



Easy network configuration
With Manager Express utility

Contact

IAdea America Corp.
20 Fairbanks, Suite 170
Irvine, CA 92618
Tel: +1-949-305-6489
Email: US-Sales@IAdea.com

IAdea Corporation (Headquarters)
3F, No. 33, Alley 77, Xing-ai Road
Taipei, Taiwan 114
Phone: +886-2-2791-1110
Fax: +886-2-2791-1170
Email: Sales@IAdea.com
Website: <http://www.IAdea.com>

Authorized Reseller

