



## IAdea America Corp.

20 Fairbanks, Suite 170 Irvine,  
CA 92618, USA  
Phone: +1-949-305-6489  
Email: [us-sales@iadea.com](mailto:us-sales@iadea.com)

## IAdea Headquarters

3F, No. 21, Lane 168, Xingshan Road  
Taipei, Taiwan 114  
Phone: +886-2-2791-1110  
Fax: +886-2-2791-1170  
Email: [sales@iadea.com](mailto:sales@iadea.com)

# POWERING EXPERIENCES AND PRODUCTIVITY

IAdea Catalogue

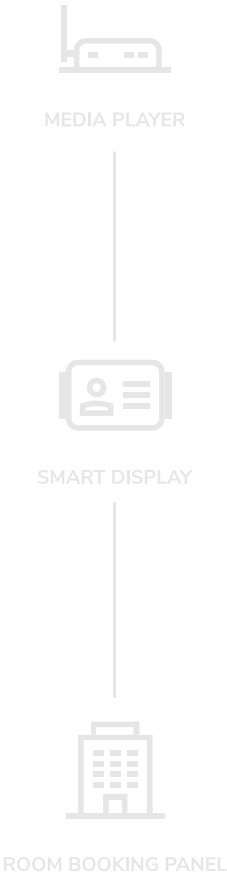
Digital Signage

Facility Management



# Table of Content

- A Glance of IAdea 20 Years of Trust / IAdea Ecosystem ————— P1–P2
- Facility Management
  - Room Management: 10” Room Panel Series ————— P3–P4
  - Conference Room Management: 15” Room Panel Series ————— P5–P6
  - Wayfinding & Digital Bulletin Board: 22” Room Panel Series ————— P7–P8
  - Desk Hoteling/Hot Desking: Desk Booking Series ————— P9–P10
- Digital Signage
  - Retail and Transportation: IAdea Digital Signage Series ————— P11–P12
- Central Management
  - Content Management Utility ————— P13
  - Remote Device Management ————— P14
- IAdea Product Lineup
  - IAdea 10” Room Panel Series ————— P15
  - IAdea 15”/22” Room Panel Series ————— P16
  - Desk Booking Series ————— P17
  - Digital Signage Series ————— P18
  - Software & Services ————— P19



“ I am honored to witness the growth and innovation in the first 20 years of IAdea’s history, during which the entire digital signage industry was born. IAdea will be powering experiences and productivity, to allow everyone to live better and work more efficiently. Join us in the decades to come to bring mission-critical intelligence across the globe. ”

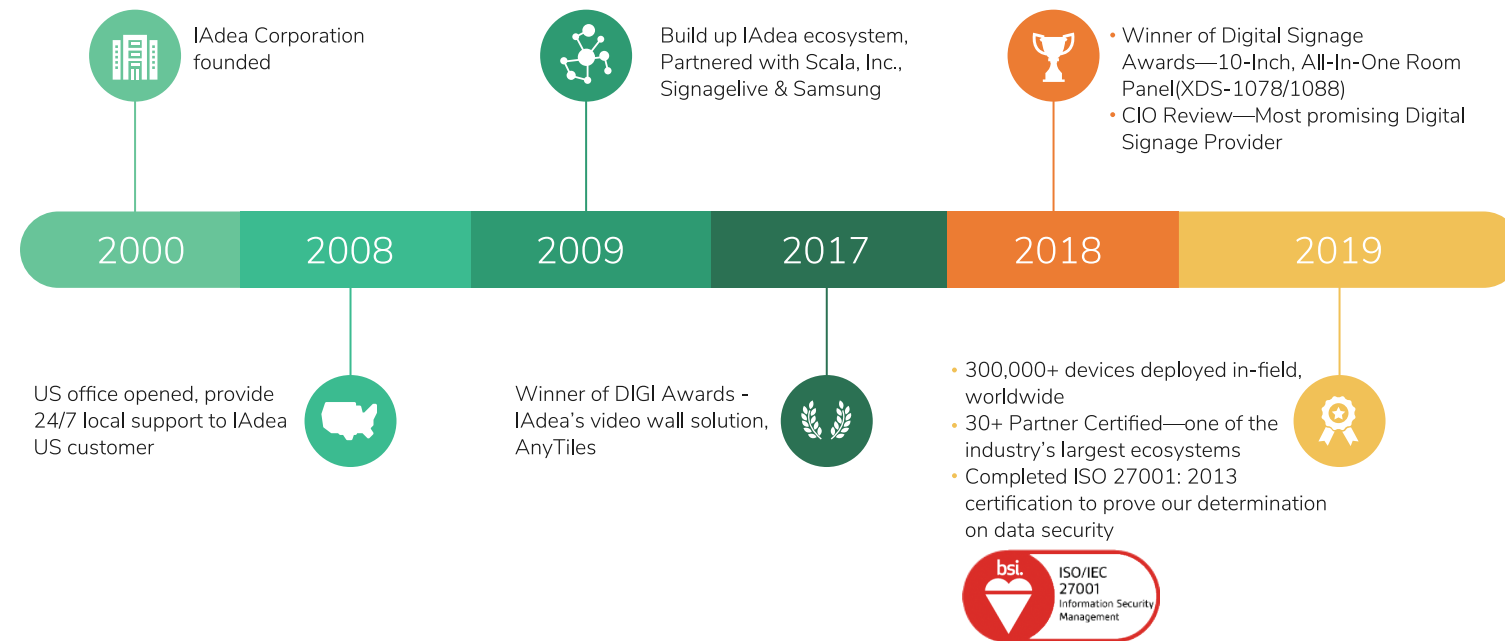
**John C. Wang**  
CEO, IAdea



# IAdea 20 Years of Trust



For the last 20 years, IAdea has created the most vibrant ecosystem with world leading partners to offer the best digital signage solutions. IAdea is on a mission to provide technology and services which power experiences and productivity to improve quality and efficiency in daily living and work.



# IAdea Ecosystem

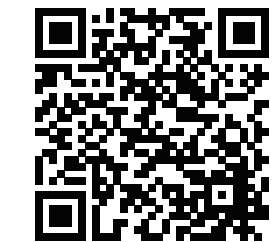
As a leading hardware platform in the smart workplace and digital signage market, IAdea sees software as a great combination between artistry and engineering. If you are a software vendor, whether it's facility management software or CMS, yours is no exception! We are inviting you to join our effort and get your software recommended to over 15,000+ professionals looking for IAdea-certified solutions. Join IAdea on an exciting journey in creating a better future!



## Benefit

- Marketing Fund
- Joint Marketing
- Lead Referral
- Designated Support

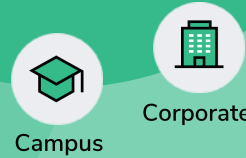
## Join us Today





# Room Management

Idea 10" Room Panel



IdeaCare



Idea Remote Device Management Service

Room Scheduling



Room Management Software

Recommended Software Partner:



Visit [Idea ecosystem](#) for more software selection

Featuring high-brightness interactive touch panels with integrated LED light bars to allow spotting available meeting rooms from a distance.



PoE Switch

Check in/Out



Room Occupancy Status



Instant Booking



— Cat5 cable  
— Power

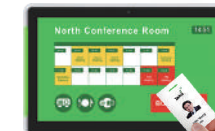
## Recommended Model



### XDS-1078

10" Interactive room panel with status lights

- 10.1" 1280 x 800 LCD wide aspect ratio
- 10-point multi-touch
- PoE for one-cable easy installation
- HDMI output to external display
- Built-in stereo speakers 1 W x 2



### XDS-1088-A/H

10" Interactive room booking panel with status lights, NFC/HID embedded

- 10.1" 1280 x 800 LCD wide aspect ratio
- 10-point multi-touch
- PoE for one-cable easy installation
- Embedded NFC reader (HID option)



Looking for larger panel?

15" Series for Conference Room Management



### XDS-1098

10" Adv. interactive room panel with status lights

- Android 9.0 operating system
- 10.1" 1280 x 800 LCD wide aspect ratio
- 10-point multi-touch
- PoE for one-cable easy installation
- Ethernet 10/100, wireless 802.11b/g/n



### WRP-1000-A/H

10" Interactive access control room panel with status lights, NFC/HID embedded

- Android 9.0 operating system
- 10.1" 1280 x 800 LCD wide aspect ratio
- PoE for one-cable easy installation
- Ethernet Giga LAN, wireless 2.4GHz/5GHz dual band
- Octa A53 powerful computing



Facility Management

# Conference Room Management

IAdea 15" Room Panel



Campus



Corporate

Enabling students and staff to reserve multi-purpose spaces like auditoriums and conference rooms, for club and group activities with IAdea 15" Room Panel that comes with status light and ID authentication for attendance management.



## Information announcement

Larger screen for more lecture information



### XDS-1588

15" Interactive room panel with status lights

- Quad-core CPU for high performance
- 10-point multi-touch
- PoE+ for one-cable easy installation
- Ethernet Giga LAN, wireless 802.11b/g/n
- Built-in stereo speakers 2 W x 2



## ID Authentication

NFC reader for attendance management



### XDS-1588-A

15" Interactive room panel with status lights, NFC/HID embedded

- Embedded NFC reader (HID option)
- Quad-core CPU for high performance
- 10-point multi-touch
- PoE+ for one-cable easy installation
- Ethernet Giga LAN, wireless 802.11b/g/n



IAdeaCare



IAdea Remote Device Management Service

## Room Scheduling



Room Management Software



PoE Switch

## Attendance Management



## Information Announcement



## Instant Booking



- Cat5 cable
- Power

Recommended Software Partner:



Visit [IAdea ecosystem](#) for more software selection

Facility Management



# Wayfinding

IAdea 22" Room Panel



Corporate



## XDS-2288

22" Interactive all-in-one reception kiosk

- 21.5" 1920 x 1080 LCD wide aspect ratio
- 10-point multi-touch
- 178/178 wide-view angle IPS panel
- Ethernet Giga LAN, wireless 802.11b/g/n
- Built-in stereo speakers 2 W x 2

Looking for larger kiosk?

Kiosk Processor XMP-7300  
for larger sized touch displays



Recommended Software Partner:



Visit [IAdea ecosystem](#) for more software selection

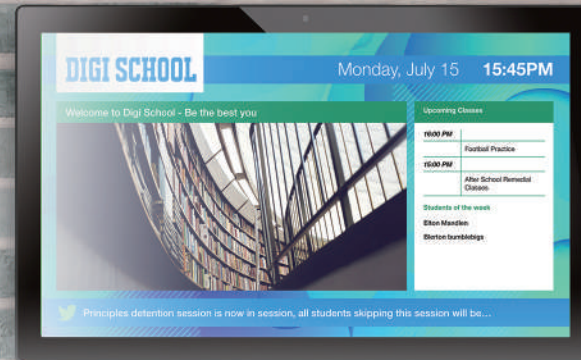


IAdea Remote Device  
Management Service



Room Finder Software

Room Finding/Room Booking



IAdea Content  
Management Service

Announcement/Information Display



Power

Cat5 cable

Power

# Digital Bulletin Board

IAdea 22" Room Panel



Campus



Digital bulletin board enables corporate and campus to announce important information without interrupting classes or meetings. With IAdea free bundle content management utility allow user to update announcement anywhere, any time.



## XDS-2285

22" Non-touch all-in-one display

- 21.5" 1920 x 1080 LCD wide aspect ratio
- 250 nits maximum brightness
- 178/178 wide-view angle IPS panel
- Ethernet Giga LAN, wireless 802.11b/g/n
- Built-in stereo speakers 2 W x 2

Facility Management

# Desk Hoteling / Hot Desking

Desk Booking Device



Corporate



## WDB-001

Desk booking device

- WDB-001 with gateway
- Push button for hot desk booking
- Customizable LED light bar
- PIR Sensor for occupancy check
- POE+ for simple and elegant installation



## WDB-001-A/H

NFC/HID embedded desk booking device

- WDB-001-A/H with gateway
- NFC/HID Badge Reader
- Customizable LED light bar
- PIR Sensor for occupancy check
- POE+ for simple and elegant installation

Desk Surfaces



Partition/Dividers



Recommended Software Partner:

**pronestor**

Visit [IAdea ecosystem](#) for more software selection

**IAdeaCare**



IAdea Remote Device Management Service

Desk Scheduling



Desk Booking Software

Desk Hoteling



PoE+ Switch

IAdea Desk Gateway

Check In/Out

Hot Desk booking

Desk Occupancy Status

Facility Management

- Cat5 cable
- USB cable
- Power



# Retail

Idea Digital Signage Series

Elevating your customer's shopping experience with vibrant, informative and engaging visual communications. Dynamic digital signage delivers an increased ROI with engaging advertisements promoting in-store sales and future promotions prompting future visits.



## XMP-7300

True 4K signage player

- HDMI 2.0 certified
- Supports 4K @ 60 fps
- Wide temperature operation (-20 ~ 50° C)
- True 4K playback for video/image/HTML5
- Gigabyte Ethernet, wireless 802.11b/g/n



## MBR-1100

FHD palm size, economical compact player

- Compact and plug and play
- Full HD @ 1080p image quality
- Comes with self-recovery mechanism
- Ethernet 10/100 BASE-T, wireless 802.11b/g/n
- High-gain antenna enabling smooth video playback

Recommended Software Partner:



Visit [Idea ecosystem](#) for more software selection



# Transportation

Idea Digital Signage Series

Transportation facilities can ensure their customers receive the most efficient and comfortable travelling experience by deploying commercial-grade digital signage system which provides travelers with valuable information from bus schedules, flight details, traffic information, advertisement for local attractions, to restaurant menus.



## XMP-6250

Robust FHD transportation signage player

- Packed with all mainstream, standard features
- Solid state with full HD @ 1080p image quality
- Wide temperature operation (-20 ~ 50° C)
- Advanced audio: analog stereo-out + S/PDIF
- Compatible with multiple 3rd-party software
- Ethernet 10/100 BASE-T, wireless 802.11b/g/n

Recommended Software Partner:



Visit [Idea ecosystem](#) for more software selection



Wide Temperature



Highly Robust



Watchdog Timer





## Content Management Utility



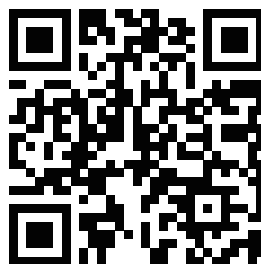
**SignApps**  
EXPRESS

- Free of Charge**  
Basic SignApps Express is free bundle with all IAdea devices
- Intuitive UI Design**  
Drag & drop to create a customized content and select built-in template to generate layout
- Accept Multiple Media Format**  
Flexible with media content types, including PowerPoint, video, image, widget
- Network Devices Discovery**  
Auto finding all of the devices connected to a network

IAdea SignApps Express is a free bundle with all IAdea devices—an elementary, easy-to-use tool that every beginner is welcome to leverage for simple demonstration, concept development and a quick run-through of all IAdea built-in features to ensure all the default hardware specs offered by IAdea are in place.

The cloud option provides a simple content distribution solution to enable you to grow your deployment from 1 to 100 in record time.

**FREE TRIAL**



## Remote Device Management

**IAdeaCare**

To ensure all your devices are .....



### Manageable

- Remote update and configuration
- One-click trouble-shooting



### Secure

- Single sign-on
- Locking screen to single URL only
- Private server option to our Enterprise user



### Monitored 24/7

- Remote screenshot
- Monitor device health status
- Track device Warranty and service renewal

**FREE TRIAL**



## 10” Room Panel Series



Model name	XDS-1071	XDS-1078	XDS-1098	XDS-1088-A/H	WRP-1000-A/H
Highlights	Basic room panel	Interactive room panel w/status lights	Adv. interactive room panel w/status lights	Interactive room booking panel w/status lights, NFC/HID embedded	Interactive access control room panel w/status lights, NFC/HID embedded
Android	7.1	7.1	9.0	7.1	9.0
CPU	Quad A9	Quad A9	Quad A53	Quad A17	Quad A53
Brightness	300	300	300	350	350
Touch		●	●	●	●
Lights		●	●	●	●
PoE		●	●	●	PoE+
Wi-Fi	●	●	●	●	●
NFC				A	A
HID				H	H
Door access					●
Scanner					●
Mounting	VESA 75 x 75, flush, glass, window, tilt (wall), gang box, table stand				

## 15”/22” Room Panel Series



Model name	XDS-1588	XDS-1588-A/H	XDS-2285	XDS-2288
Highlights	Interactive room panel w/ status lights	Interactive room panel w/ status light, NFC/ HID embedded	Non-touch all-in-one display	Touch-enabled kiosk
Android	7.1	7.1	7.1	7.1
CPU	Quad A17	Quad A17	Quad A17	Quad A17
Resolution	1920x1080	1920x1080	1920x1080	1920x1080
Brightness	350	350	250	250
Touch	●	●		●
Lights	●	●		
PoE+	●	●		
Wi-Fi	●	●	●	●
NFC		A		
HID		H		
Mounting	VESA 100 x 100, flush, window, tilt (wall), gang box, table stand		VESA 100 x 100, tilt mount, table stand	

## Desk Booking Series



Model name	WDB-001	WDB-001-A/H
Push button	●	●
Lights	●	●
PIR sensor	●	●
NFC		A
HID		H
Desk Booking Gateway		
PoE+	● (25.5W)	
Ports	Six USB host ports	
Programming	IAdea Desk Booking Framework 1.0 API	
Android	7.1	
CPU	Quad A9	
RAM	1 GB	
Storage	8 GB	
Operating temperature	32 ~ 104° F, 0 ~ 40° C	

## Digital Signage Series



Model name	MBR-1100	XMP-6250	XMP-6400	XMP-7300
Highlights	FHD palm size, economical compact player	Robust FHD transportation signage player	FHD dual output with HDMI input & PiP signage player	True 4K signage player
Android	7.1	7.1	4.4	7.1
CPU	Quad A9	Quad A9	Quad A9	Quad A17
Input	-	-	HDMI 1.4	-
Output	HDMI, 1080p	HDMI, 1080p	HDMI/ VGA, 1080p	HDMI 2.0 4K @ 60 fps
Media playback	H.264, HTML5	H.264, HTML5	H.264, HTML5, Live video-in	H.264, H.265, HTML5
Networking	Wi-Fi, Ethernet	Wi-Fi, Ethernet	Wi-Fi, Ethernet	Wi-Fi, Ethernet
Operating temperature	32 ~ 104° F, 0 ~ 40° C	-4 ~ 122° F, -20 ~ 50° C	-4 ~ 122° F, -20 ~ 50° C	-4 ~ 122° F, -20 ~ 50° C



# IAdea Software & Services



Remote Device Management	
Device Configuration and Management	Remote firmware update(Batch)
	Schedule firmware update*(Batch)
	Remote reboot/Schedule reboot*(Batch)
	Remote update content URL(Batch*)
	Remote configure settings including network, time zone, etc. (Batch*)
	Remote set up security password*
	Schedule screen off*(Batch)
	Schedule maintenance mode*(Batch)
	License management
	Device warranty tracking
Monitoring	Device live status
	View player details (firmware version, etc.)
	Remote screenshot
	Device offline email alerts
	Activity log/Generate reporting of various activity logs*
Co-management	One click troubleshoot and collect device log automatically
	Share devices with other users based on customized role setting

\*New feature in IAdeaCare v2.0



Content Management Utility	
Content Management	Remote content update**
	Create looping content / dynamic playlists
	Create multi-zone, interactive, live text, BrightWall, synchronized and other advanced playlists
	Create interactive trigger events
	Support multiple content formats including image, media, PowerPoint, widget, ticker, audio, URL
	Schedule playlist
	Publish playlists to multiple devices with in same network

\*\*Cloud update license required